

- District 1, 1.766 Acres
- District 2, 101.084 Acres
- District 3, 46.456 Acres

**GOLDEN EAGLE ACRES, INC.**

**RESIDENTIAL SUBDIVISION  
SECTION 6, T6N, R66W, 6th P.M.  
WELD COUNTY, COLORADO**

REV: 8-15-18



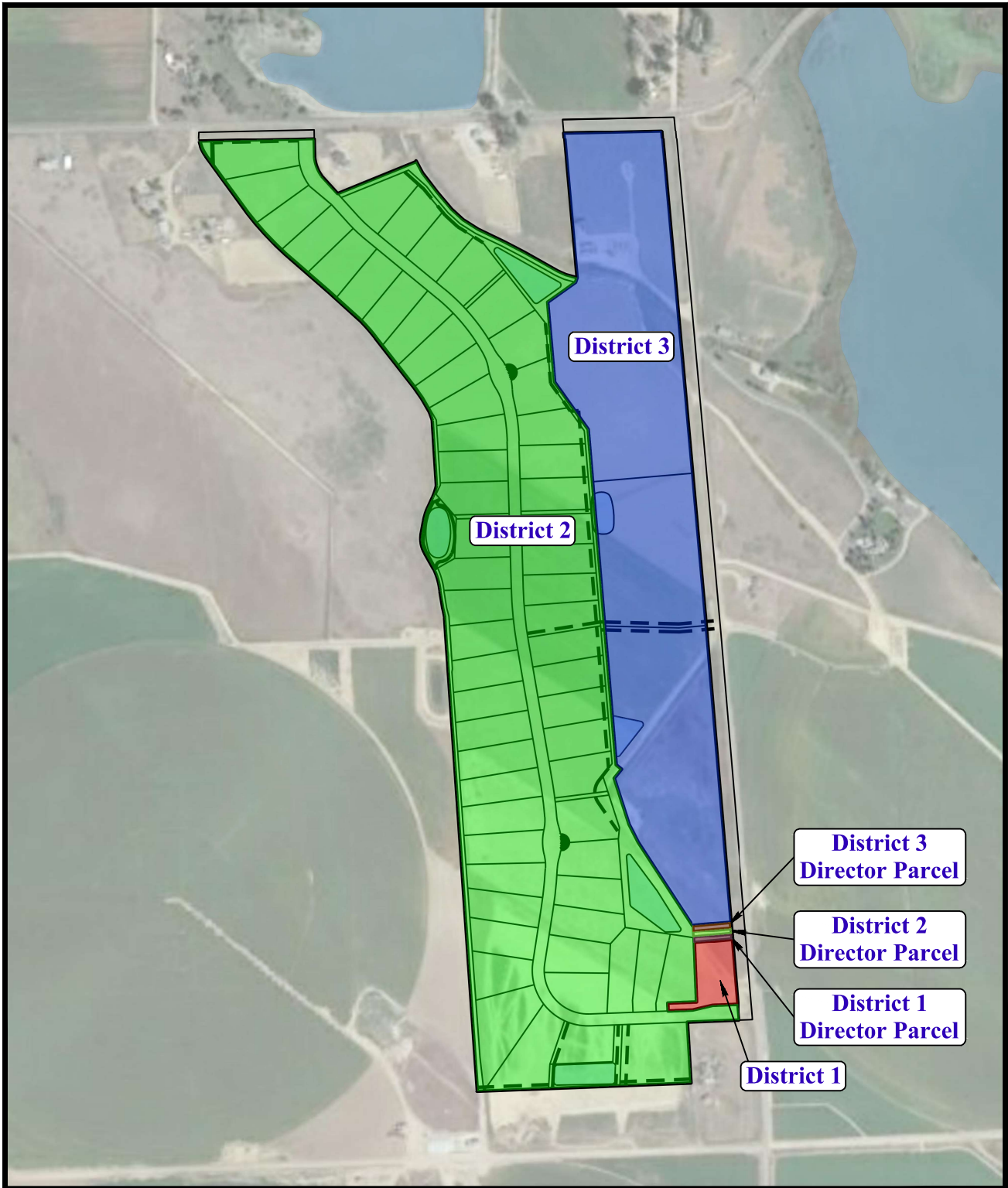
DRAWN BY: D.B.S.

DATE DRAWN: 12-23-2016

**District Boundaries**



**UELS, LLC**  
Corporate Office \* 85 South 200 East  
Vernal, UT 84078 \* (435) 789-1017



- District 1, 1.766 Acres
- District 2, 101.084 Acres
- District 3, 46.456 Acres
- District 1 Director Parcel, 0.125 Acres
- District 2 Director Parcel, 0.125 Acres
- District 3 Director Parcel, 0.125 Acres

**GOLDEN EAGLE ACRES, INC.**

RESIDENTIAL SUBDIVISION  
SECTION 6, T6N, R66W, 6th P.M.  
WELD COUNTY, COLORADO

REV: 8-15-18



DRAWN BY: D.B.S.

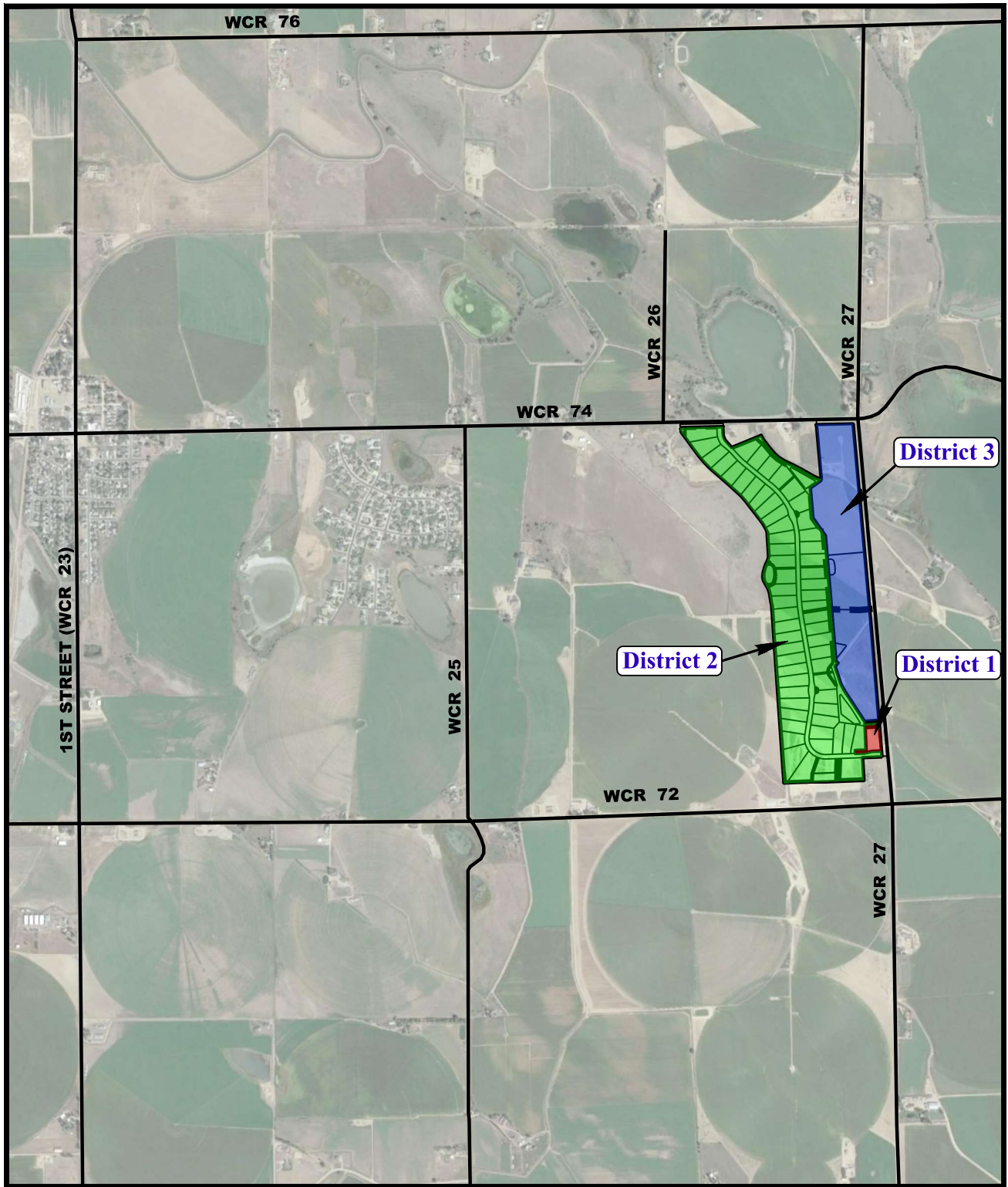
DATE DRAWN: 12-23-2016

**District and Director  
Parcel Boundaries**



**UELS, LLC**  
Corporate Office \* 85 South 200 East  
Vernal, UT 84078 \* (435) 789-1017

# GOLDEN EAGLE ACRES METROPOLITAN DISTRICTS



## VICINITY MAP

**RESIDENTIAL SUBDIVISION**  
**SECTION 6, T6N, R66W, 6th P.M.**  
**TOWN OF SEVERANCE**  
**WELD COUNTY, COLORADO**

REV: 8-15-18



DRAWN BY: D.B.S.	DATE DRAWN: 01-23-2017
	SCALE: 1" = 2000'



**UELS, LLC**  
 Corporate Office \* 85 South 200 East  
 Vernal, UT 84078 \* (435) 789-1017